

AI/ML Adoption in A Home Insurance Product

Shawn Jin
MD, Head of Advanced Analytics
Plymouth Rock Home Group

Nov 13rd, 2024

What does AI mean to us?

Wikipedia

Artificial intelligence (AI), in its broadest sense, is intelligence exhibited by machines, particularly computer systems.

ChatGPT

In short, AI is about building machines or software that can perform tasks that traditionally require human intelligence, with applications ranging from everyday tools to complex scientific research.

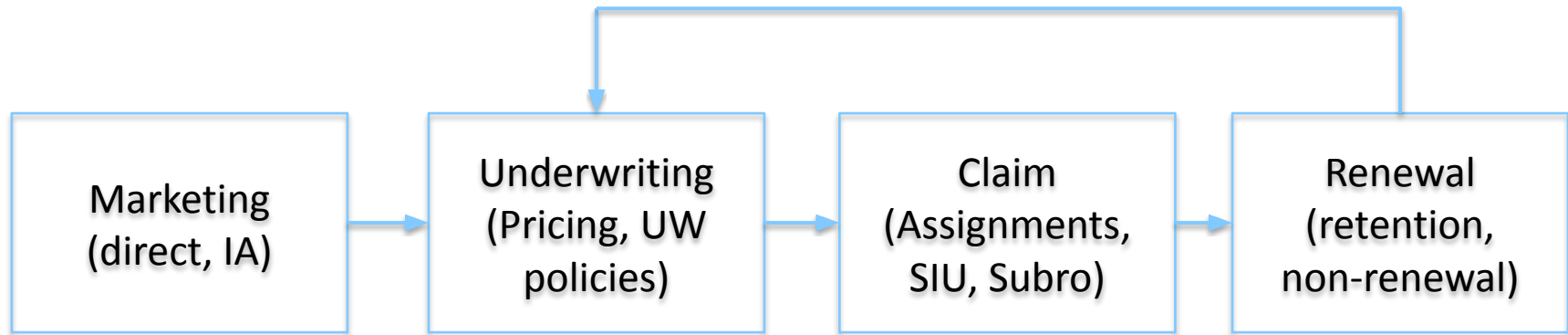
For us

Machine intelligence-driven data, processes, or tools:

- Developed by scientists, either in-house or outsourced
- Deployed by technicians, both internal and external
- Utilized by internal business units

AI/ML accelerates the launch of business strategies!

AI & ML play important roles in our product life cycle

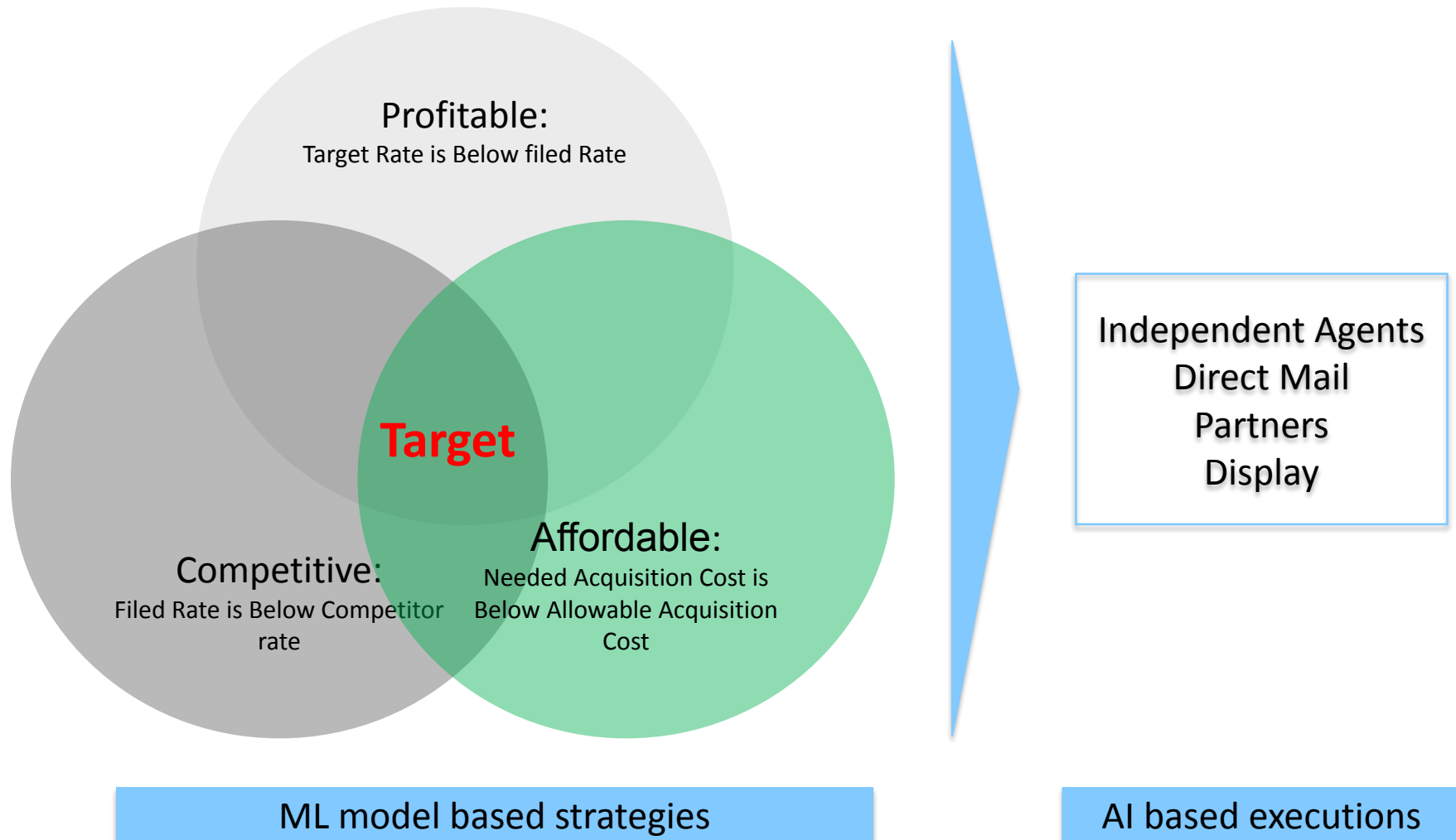


DS **compiles** AI or Non-AI based data and **build** ML models to support business units

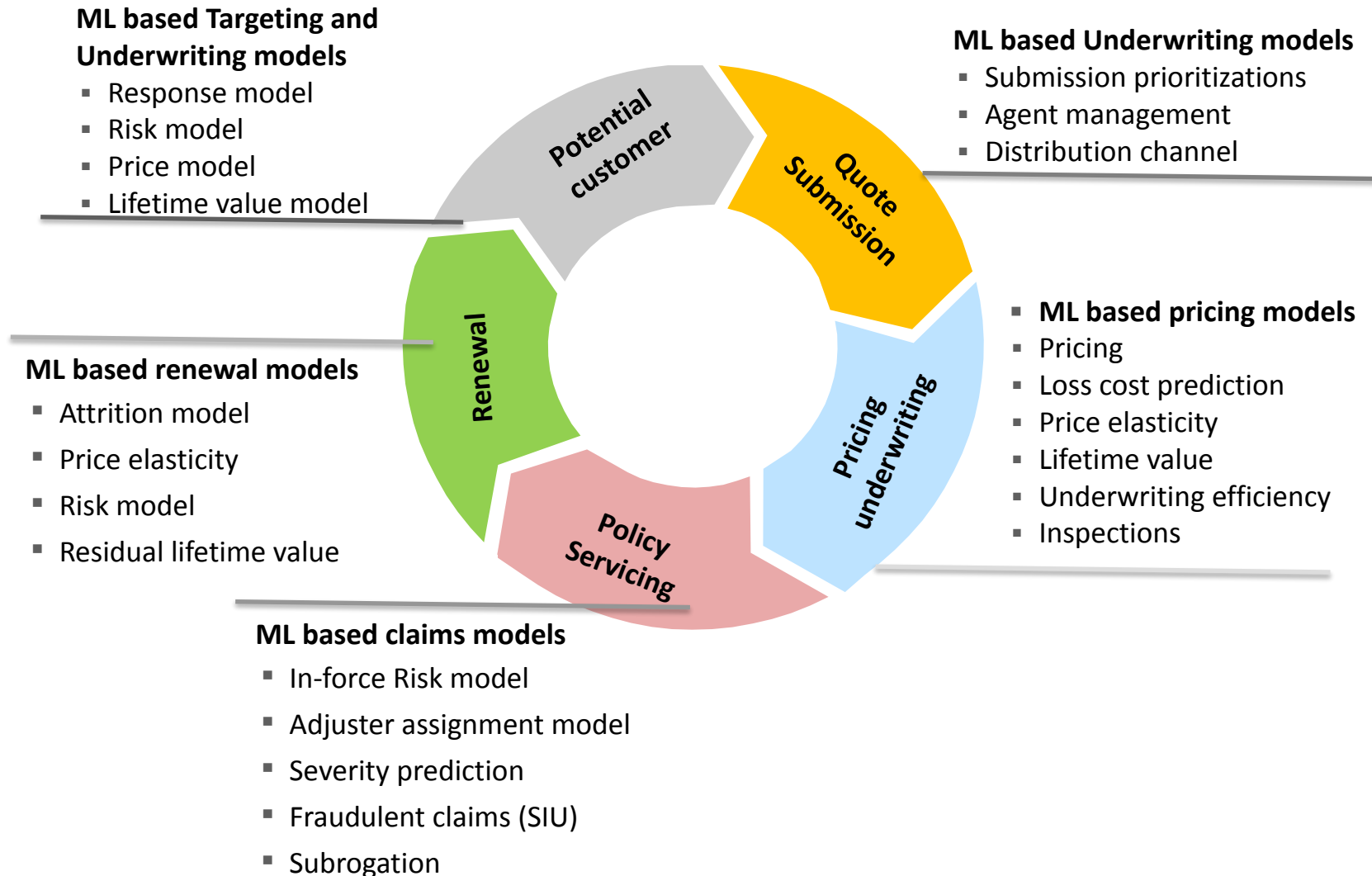
IT uses AI technologies to **implement** strategies developed by business units

Business Units use AI or Non-AI based processes to **design and execute** strategies

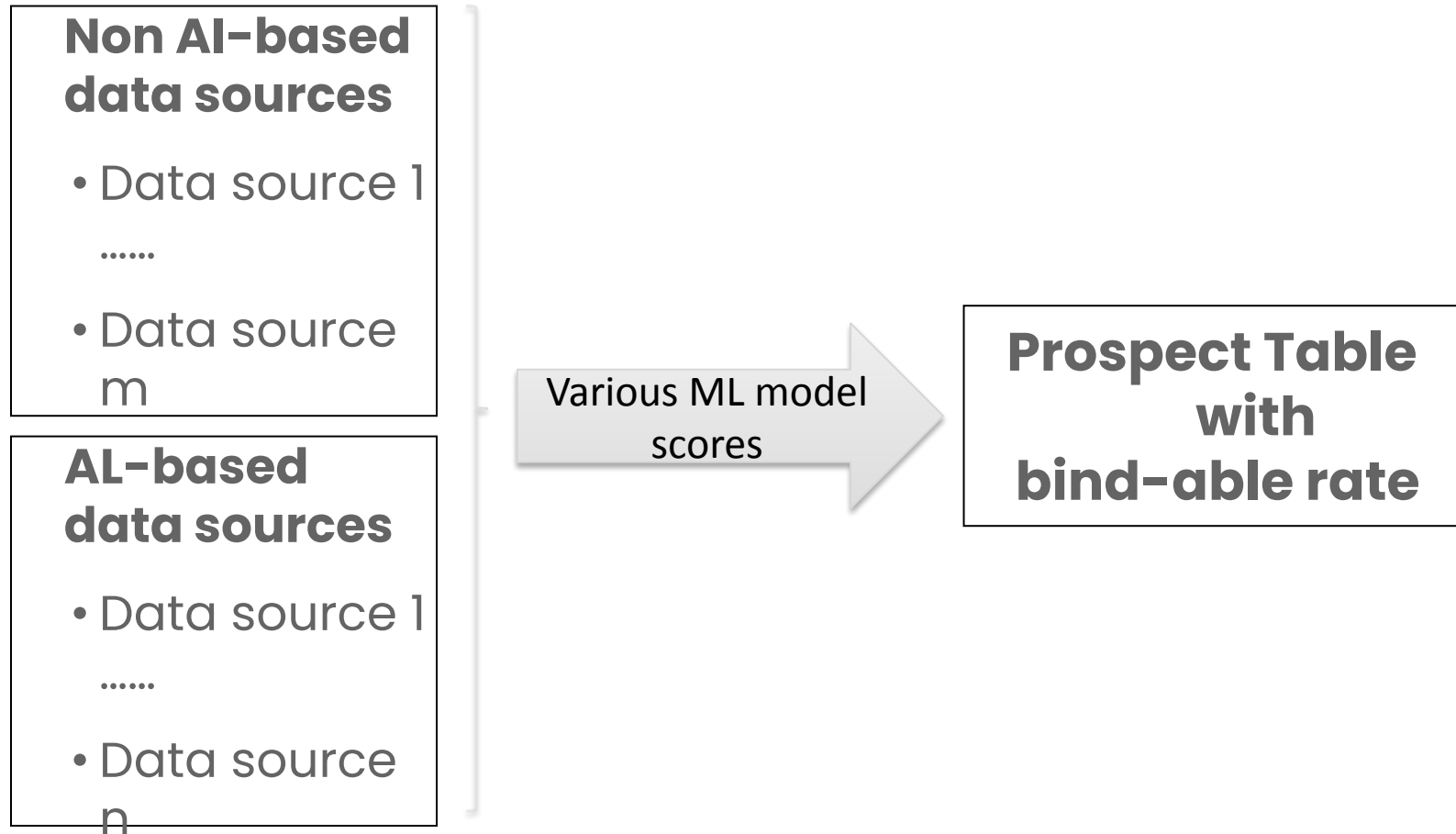
We target new customers which are profitable, competitive and affordable



with ML models support business strategies in every phase of the customer life cycle

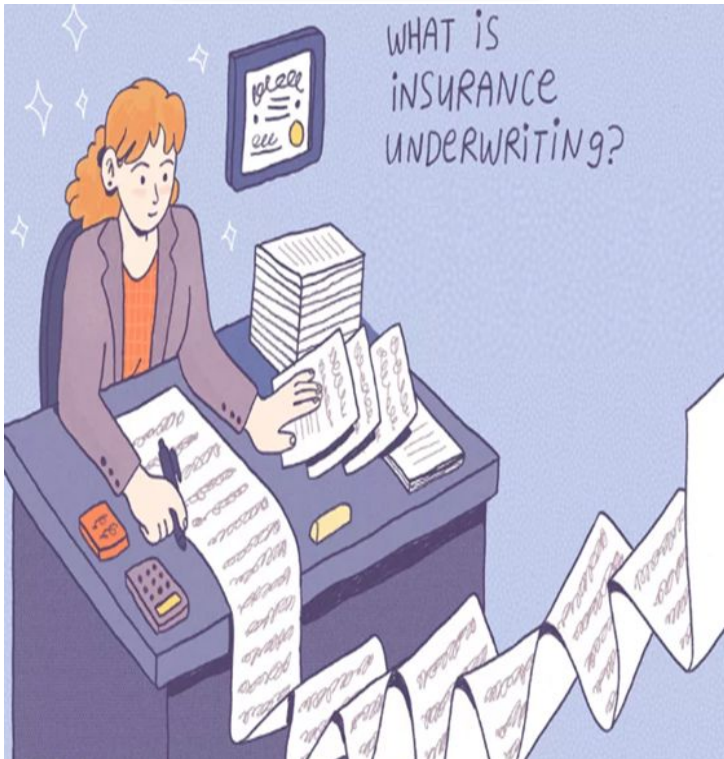


by continuously acquiring various data sources to separate good and bad risks



to enable us to have an easy quote process

Before



After

234 Western Rd, Wellesley Hills, MA 02481

John

Doe

11/24/1978

By continuing, you acknowledge you have reviewed our [information disclosure](#).

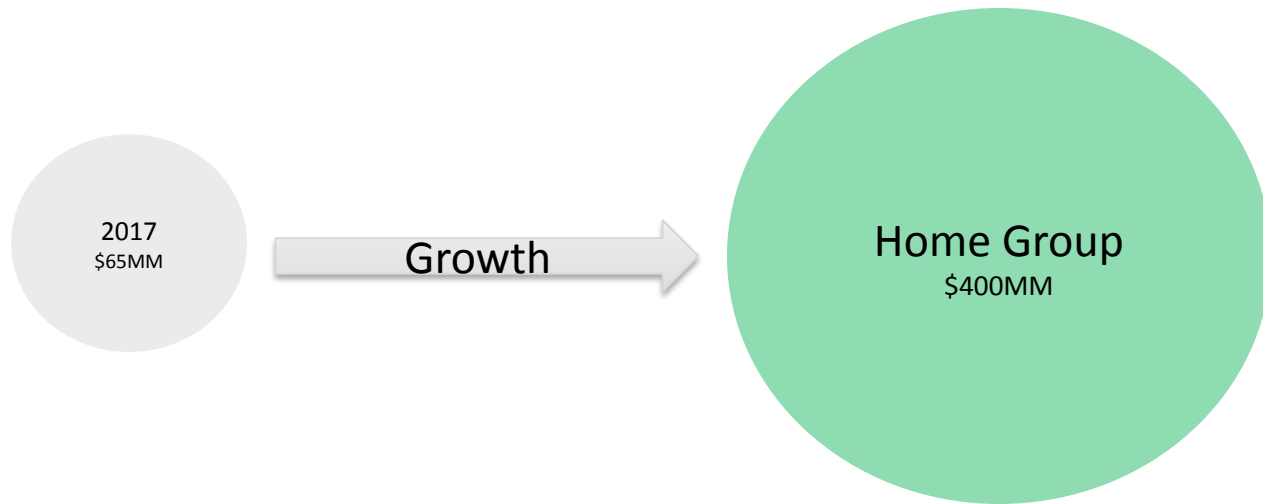
By clicking the "Agree & Get Quote" button below, I am agreeing to receive calls and/or emails from Plymouth Rock and its agents to market insurance products at the contact information I provide which may be auto-dialed and use artificial or pre-recorded voice messages or SMS communications. I understand that my agreement to receive these calls and/or emails is not required to purchase any goods or services. I have also read and agree to the [Terms and Conditions](#) & [Privacy Policy](#).

Agree & Get Quote

[Retrieve your quote](#)

[Call for a quote 833-857-5848](#)

which helps us grow profitably fast



ML are based on various analytics methods

Testing

DoE—Design of Experiment

**Descriptive
Analytics**

Visual

Correlation

Factor analysis

Clustering/Segmentation analysis

**Predictive
Analytics**

GLM/LogisticRegression/Frequency/Severity models

Survival models

Time series models

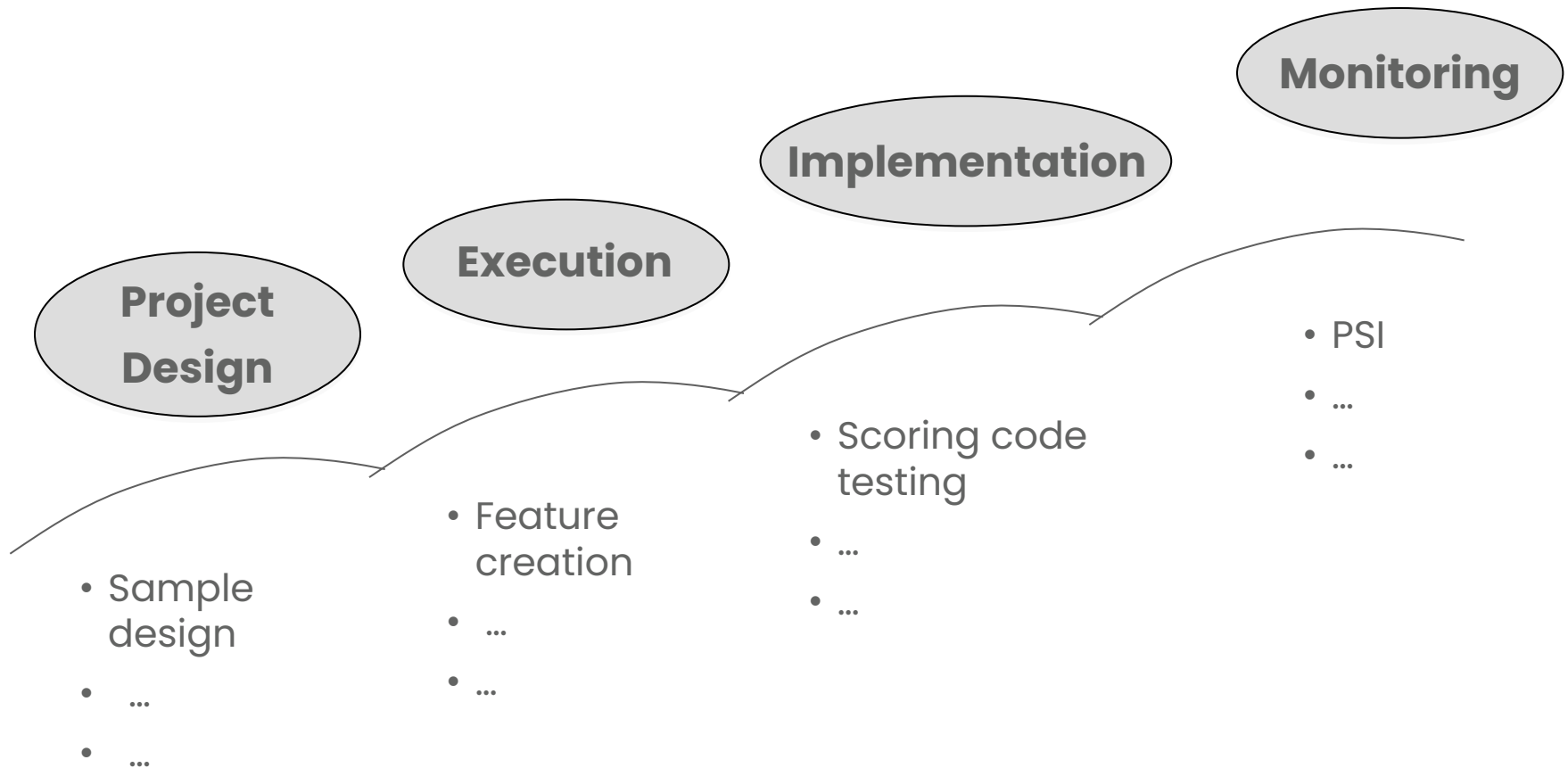
Discriminate analysis

DecisionTree/RandomForest/GBM/XGBoost/etc

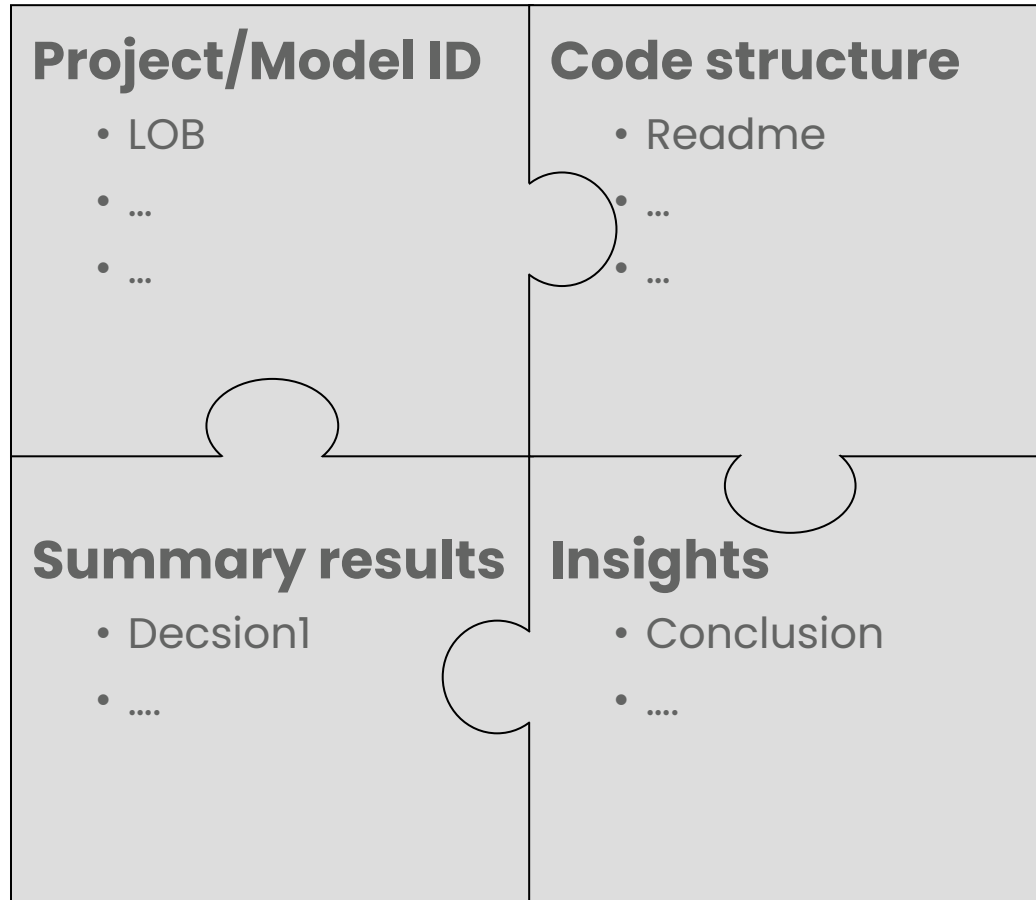
Neural networks/Deep Learning

Mixed Modelling

We also implement standardized analytical processes to create AI-driven routines



so that the best practice is institutionalized



We also create a platform for individuals to grow and succeed

Personal Attributes

- Problem Solver
-
-
- Fun and pleasant



Technical Skills

- Languages
-
-
- Communications



Career Advance

- Data Scientist
-
-
- VP Data Scientist

Q&A